



e | v a

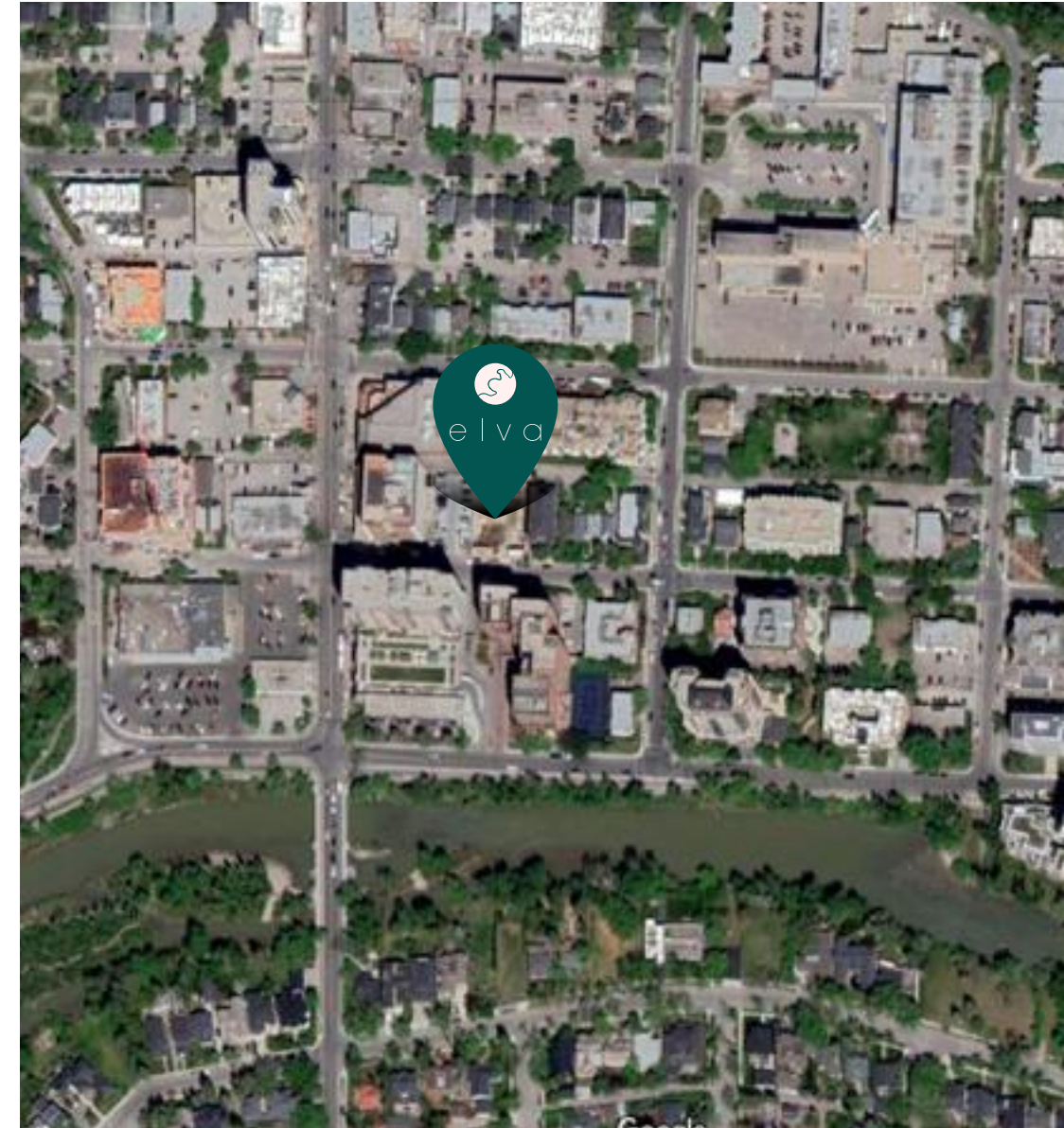


elvayyc.com



ELEVATED LIVING AWAITS

Comprised of 61 boutique rental apartments, Elva offers modern living in historic setting. And with interiors inspired by Scandinavian aesthetics – modern, clean lines and serene spaces – Elva is an elevated and sophisticated housing addition to Calgary.



MODERN LIVING IN HISTORIC MISSION

Welcome to the revitalized, inner-city neighbourhood of Mission. Where unique history meets modern architecture and design, Elva in Mission offers residents an immediate connection to everything you need.

Pedestrian-friendly, Mission is only a 20-minute walk to the downtown core and is home to street festivals, great eats, boutique shopping, and a lively and engaged community of people.

**COME
HOME TO
STYLISH
SIMPLICITY**



Idyllically situated one block from the Elbow River in the Mission neighbourhood, Elva's name comes from the Norwegian word for river, elv. Elva offers 61 contemporary, boutique rental apartments, featuring studio, 1-, and 2-bedroom floorplans. Designed for the modern renter, Elva offers keyless entry to all homes, concrete construction for superior soundproofing, and is a fully managed building.

BUILDING FEATURES



- Thoughtfully designed lobby with welcoming fireplace
- Rooftop patio with communal BBQ
- Concrete structure allows for superior soundproofing
- FOB controlled access to parkade and front entry
- Keyless interior entry to all homes
- Secure additional storage available (additional cost)
- Heated, secure underground parking for vehicles and bikes (parking additional)
- Fully managed building includes on-call maintenance personnel

LUXURY BOUTIQUE LIVING



Curated and designed for the modern apartment renter, luxurious and refined interiors inspired by the clean, contemporary style of Scandinavian design, offer the perfect place to come home to.

SUITE FEATURES

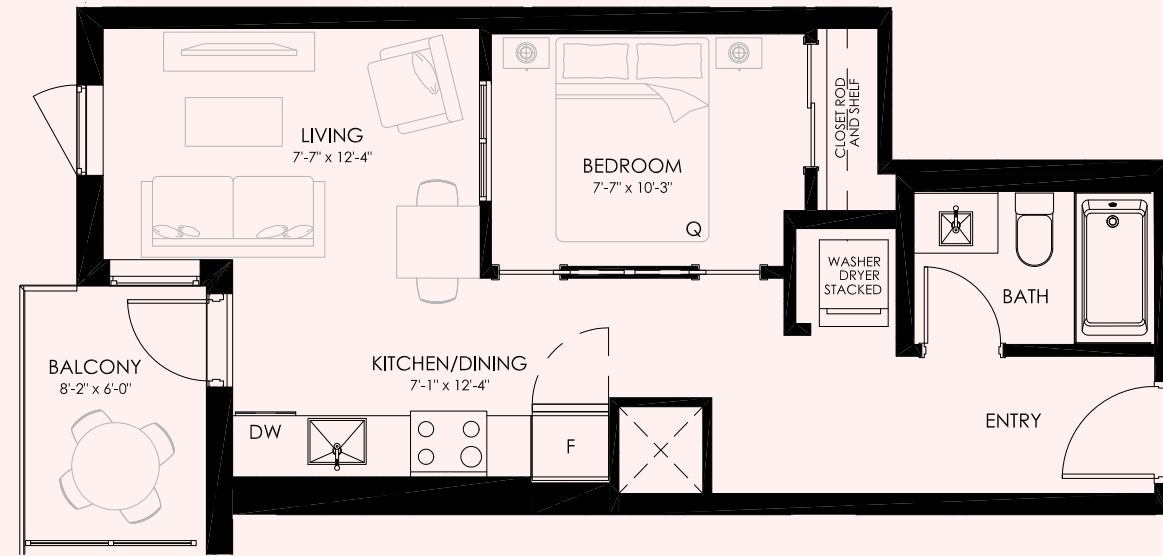


- Stone countertops in the kitchen and bathrooms
- Stainless steel kitchen appliance package
- Undermount sinks throughout
- Flat-panel cabinetry with soft-close drawers
- Matte black door hardware
- Luxury vinyl plank flooring
- Large windows with roller shades for privacy
- Convenient in-suite laundry
- Low-flow water conserving toilets

- Open shelving in bathrooms for additional storage
- 2- bedroom homes feature bath and walk-in shower
- High ceilings and concrete construction create an open airy space that has superior soundproofing
- Pet friendly
- Air conditioning
- Balconies or terrace on all suites
- Walk-up homes on ground floor with deadbolt security
- Solid core doors



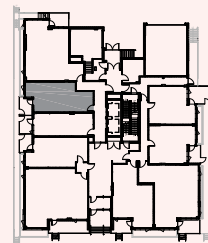
e | v a



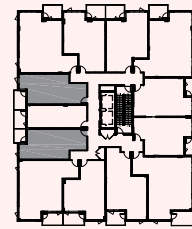
UNIT A1

STUDIO 1 BATH
UNIT: 495 SF

TERRACE LEVEL 1: 59 SF
BALCONY LEVEL 2-5: 51 SF



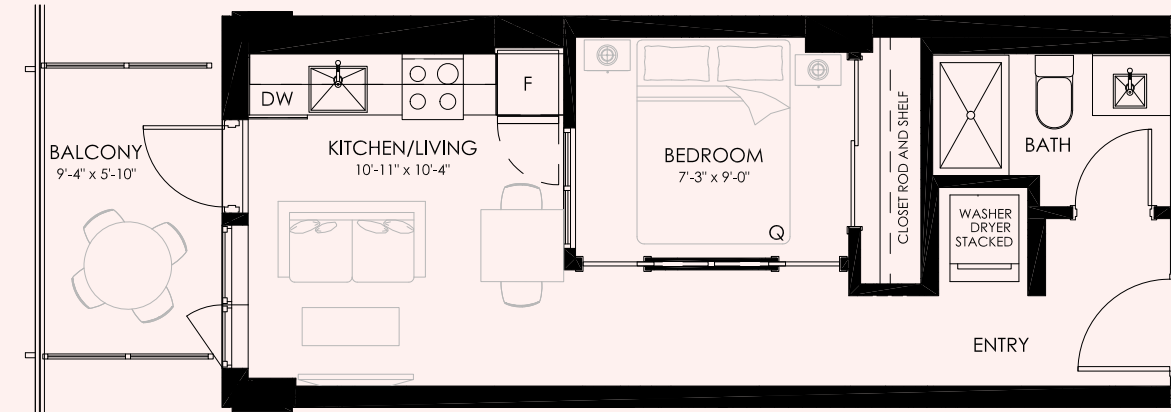
LEVEL 1



LEVEL 2-5



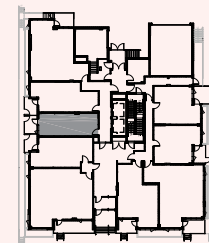
e | v a



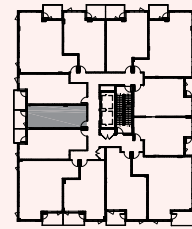
UNIT A2

STUDIO 1 BATH
UNIT: 380 SF

TERRACE LEVEL 1: 62 SF
BALCONY LEVEL 2-5: 58 SF



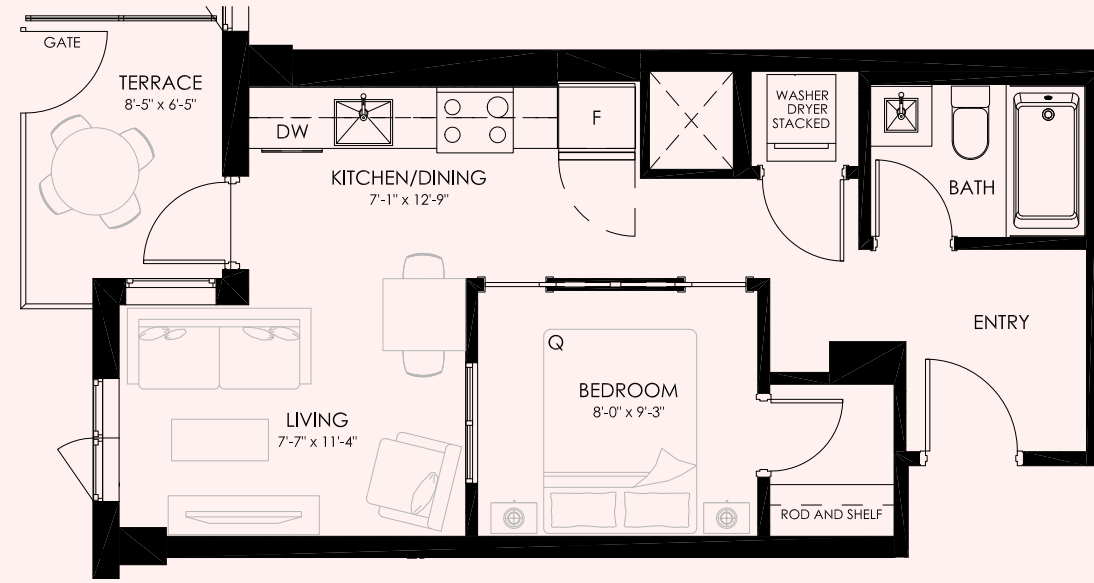
LEVEL 1



LEVEL 2-5

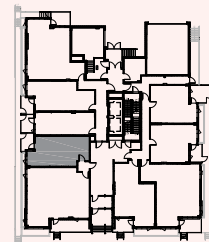


e | v a



UNIT A3

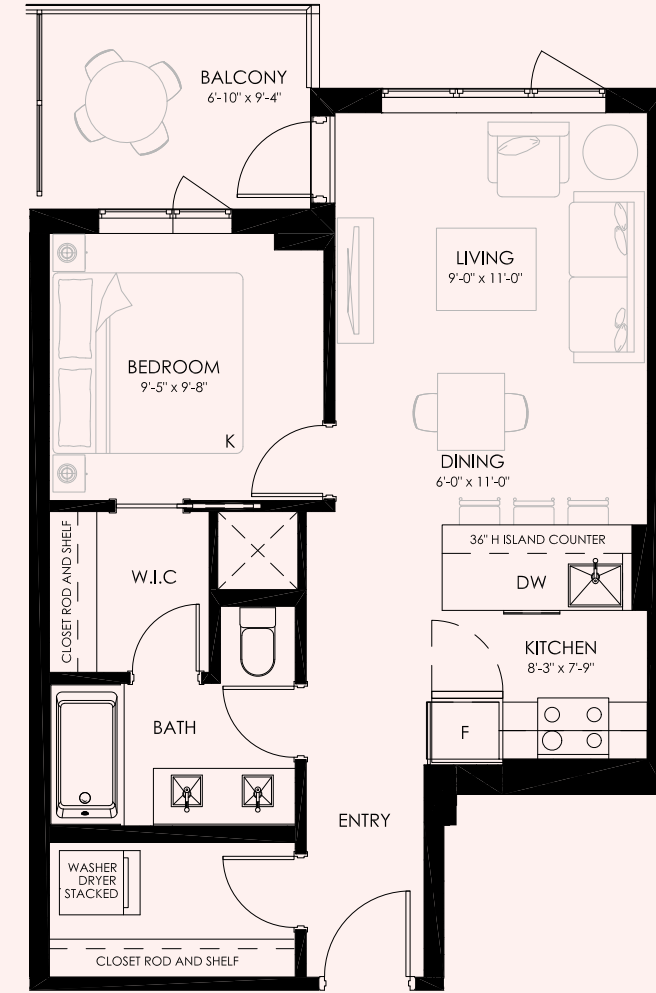
STUDIO 1 BATH
UNIT: 476 SF
TERRACE: 58 SF



LEVEL 1

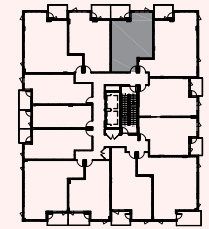


e | v a

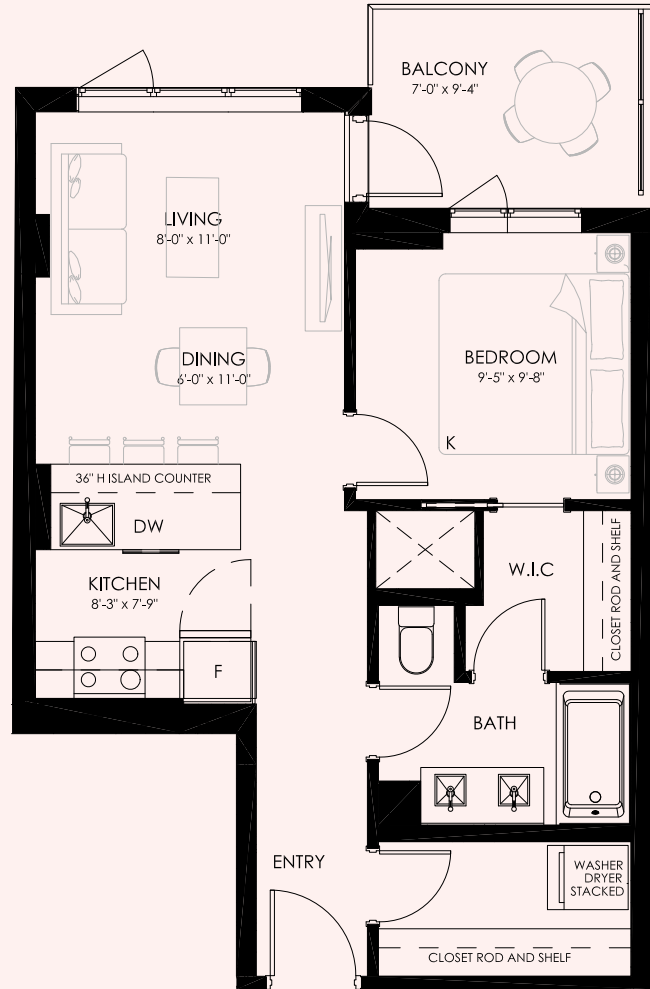


UNIT B1

1 BED + 1 BATH
UNIT: 591 SF
BALCONY: 68 SF

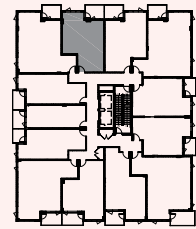


LEVEL 2-5

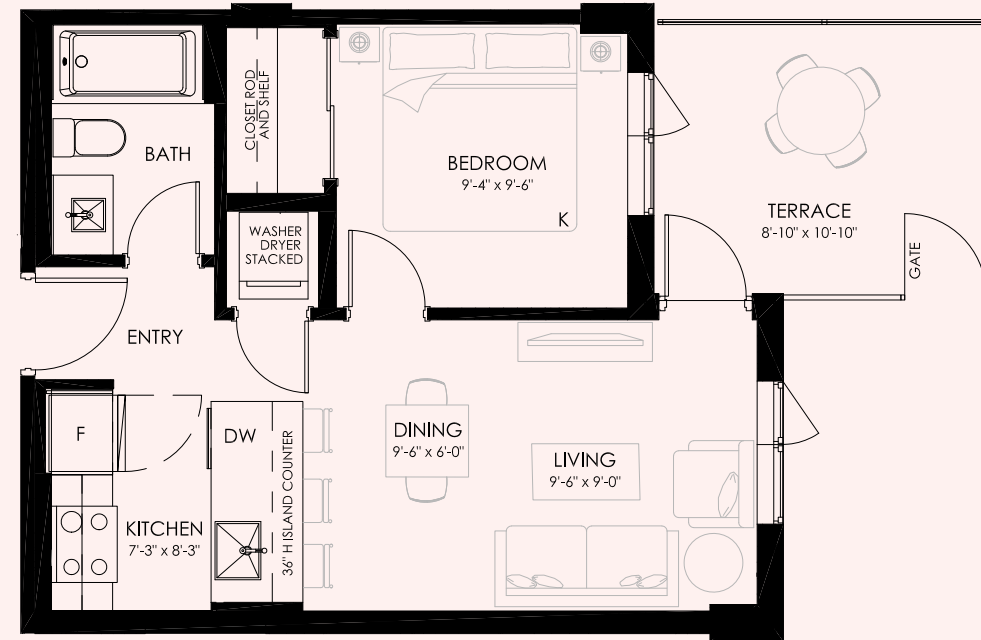


UNIT B2

1 BED + 1 BATH
 UNIT: 572 SF
 BALCONY: 68 SF

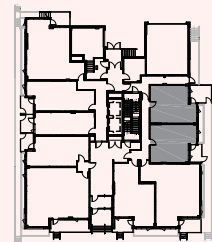


LEVEL 2-5



UNIT C1

1 BED + 1 BATH
 UNIT: 458 SF
 TERRACE: 54 to 99 SF



LEVEL 1

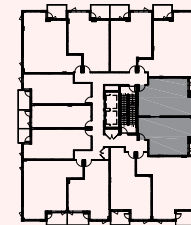


e | v a



UNIT C2

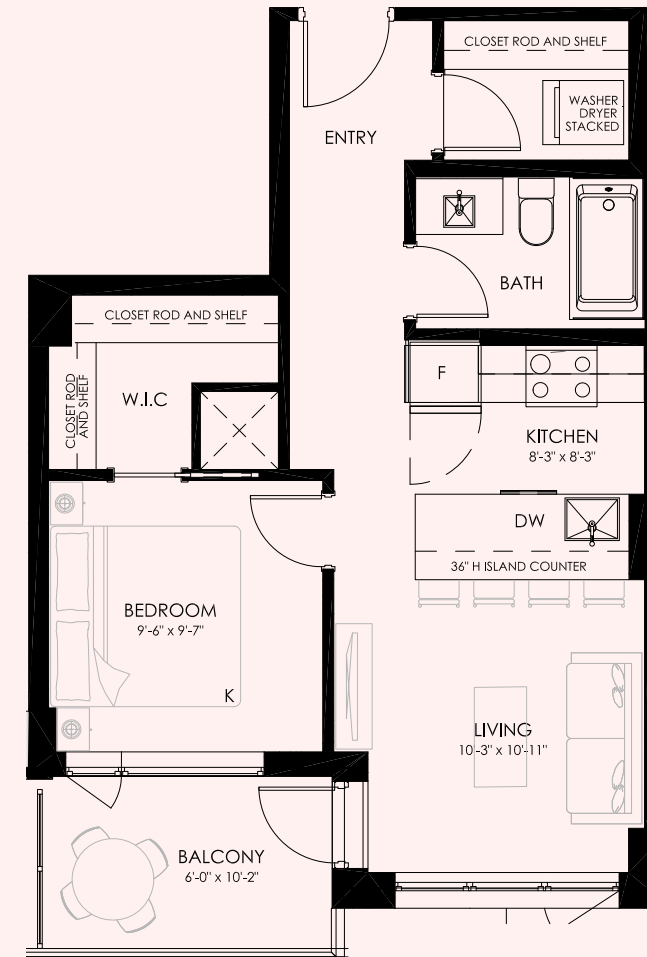
1 BED + 1 BATH
 UNIT: 534 TO 560 SF
 BALCONY: 54 SF



LEVEL 2-5

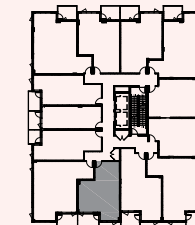


e | v a



UNIT D

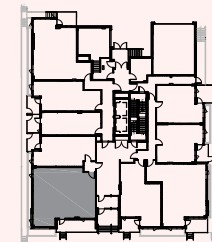
1 BED + 1 BATH
 UNIT: 557 SF
 BALCONY: 66 SF



LEVEL 2-5



e | v a



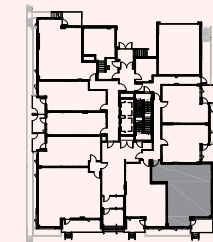
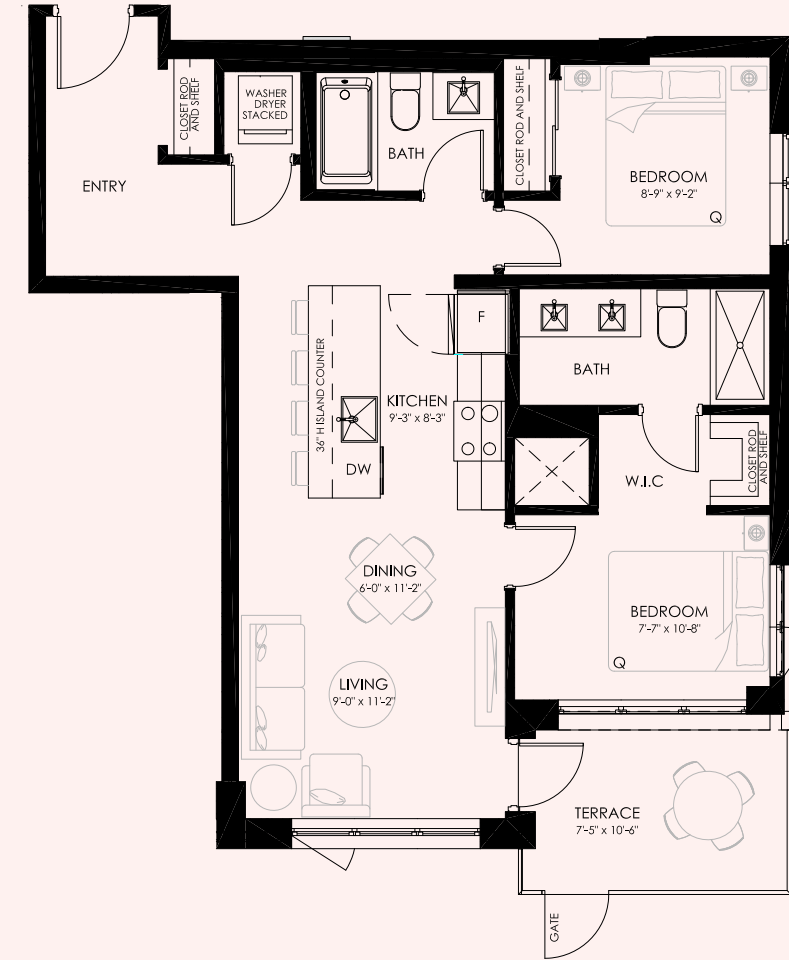
LEVEL 1

UNIT E1

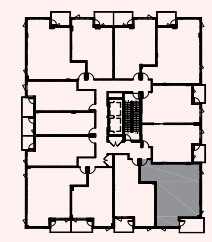
2 BED + 2 BATH
 UNIT: 937 SF
 TERRACE: 124 SF



e | v a



LEVEL 1



LEVEL 2-5

UNIT E1a

2 BED + 2 BATH
 UNIT: 820 to 826 SF
 TERRACE: 75 SF
 BALCONY: 84 SF

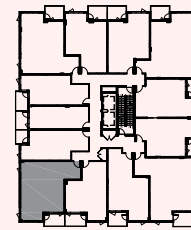


e l v a



UNIT E2

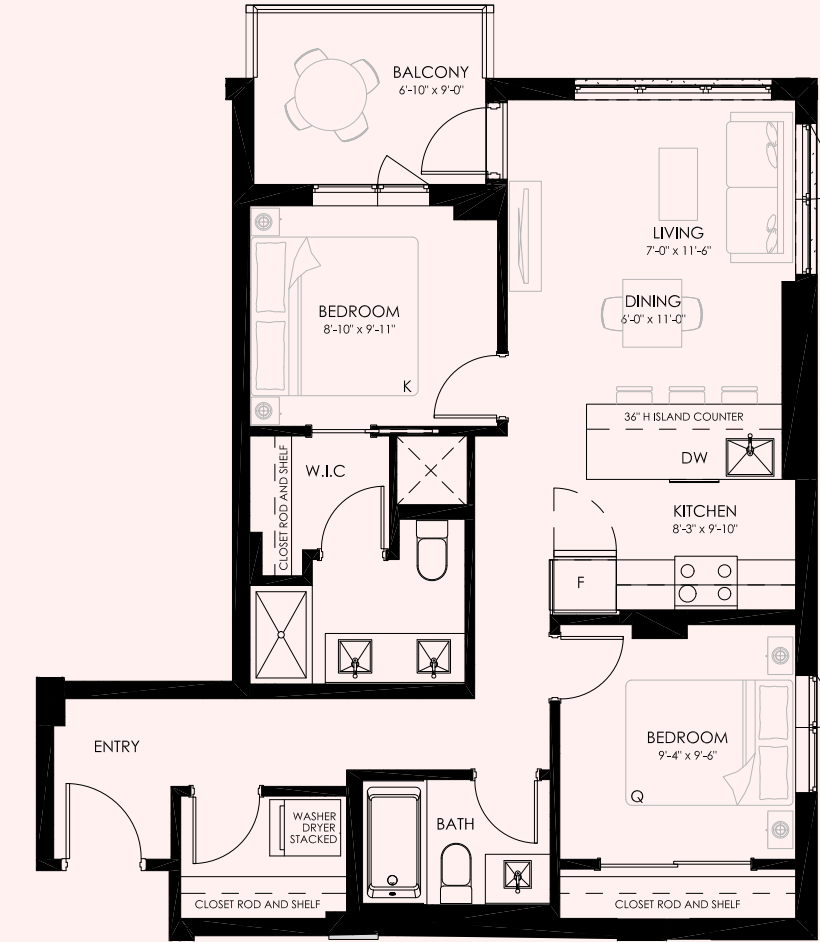
2 BED + 2 BATH
UNIT: 768 SF
BALCONY: 64 SF



LEVEL 2-5

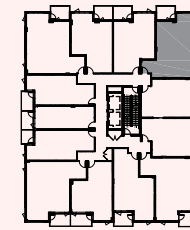


e l v a



UNIT F1

2 BED + 2 BATH
UNIT: 804 SF
BALCONY: 66 SF



LEVEL 2-5



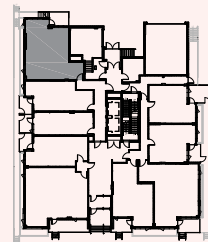
e | v a



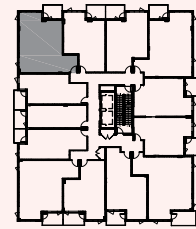
UNIT F2

2 BED + 2 BATH
UNIT: 766 SF

TERRACE: 70 SF
BALCONY: 67 SF



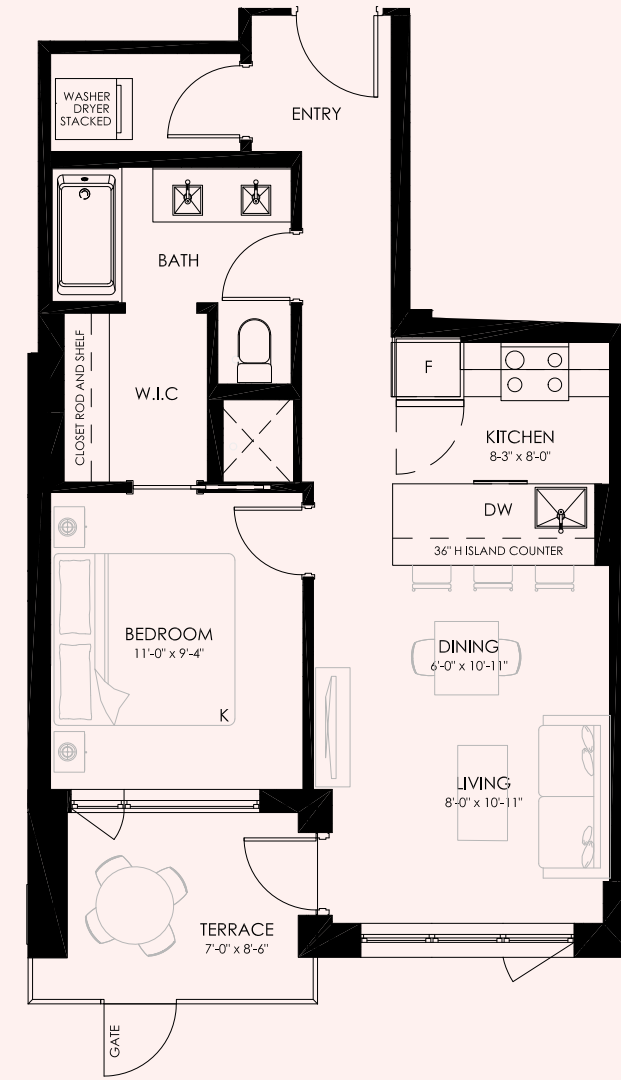
LEVEL 1



LEVEL 2-5



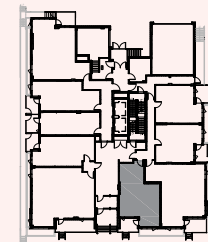
e | v a



UNIT G1

1 BED + 1 BATH
UNIT: 602 SF

TERRACE: 62 SF



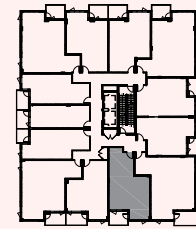
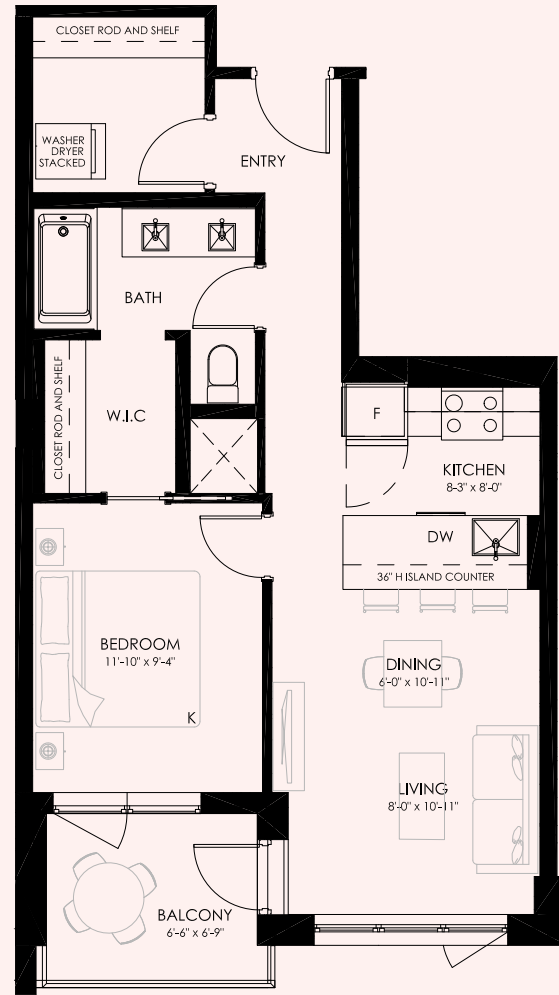
LEVEL 1



WEXFORD DEVELOPMENTS

Wexford Developments is a real estate investment, development, and management company with over \$500 million of assets under management, with offices in Calgary, Alberta, West Palm Beach, Florida and New York, New York. Currently, Wexford has approximately 1,000,000 square feet under management, with a development pipeline exceeding 2.2 million square feet at a value of over \$835 million.

Wexford Developments participates in all stages of the business, including acquisition, zoning, servicing, development, marketing and sales. It prides itself on its entrepreneurial thinking, a focused investment approach, and a lean, efficient business model to exceed the expectations of its clients, development partners and equity investors.



LEVEL 2-5

UNIT G2

1 BED + 1 BATH

UNIT: 631 SF

BALCONY: 62 SF



e | v a

320 25 Avenue SW
Calgary, AB T2S 0L4

leasing@elvayyc.com
403.852.2136

elvayyc.com